

SANCTUARY

Newsletter of The
White Memorial
Conservation Center

Vol. XXXVI | No. 4

Fall 2019

Museum Hours:

Monday - Saturday 9:00 A.M. - 5:00 P.M.

Sunday 12:00 P.M. - 5:00 P.M.

For Information

Phone: 860-567-0857

E-Mail: info@whitememorialcc.org

Website: www.whitememorialcc.org



*Peter Punzi, Executive Director of The White Memorial Foundation
with his son, Nicholas, overlooking the Hudson River. Photo credit: Patti Punzi*

Room to Grow

By Peter Punzi, Executive Director, The White Memorial Foundation

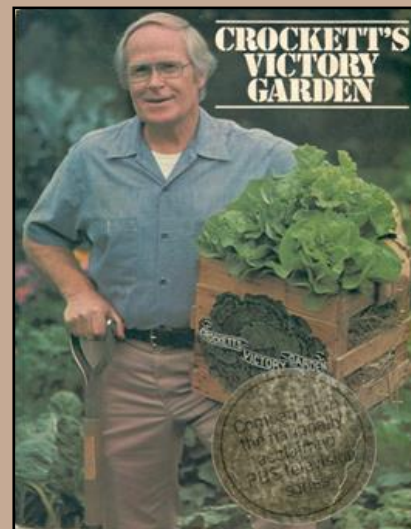
It is with great pleasure that I join the White Memorial family as its third executive director. I would like to thank the selection committee (Arthur Diedrick, John Morosani, Hugh Schoelzel, Phil Samponaro, Charles Roraback, and retiring executive director Keith Cudworth) for making this such a great transition. I have never felt so welcomed to a new position. After accepting I was even greeted with a congratulatory email from White Memorial's first executive director Gene Marra. In the months leading up to my taking over White Memorial I have been able to review many internal documents and also the 1938 and 2012 historic treatises produced by White Memorial. I am very grateful to be a part of this amazing organization and to join the Litchfield Hills community.



Harvesting Bibb Lettuce

I am looking forward to working with the staff and board to continue the positive growth of the organization and to expand its influence on the fields of environmental conservation and nature education. My personal mission is to use the skills I have honed over my career to engage people in the natural world as well as discover, implement, and share best practices for conservation and education. From an early age I have been fascinated by the great outdoors. My childhood was inspired by exploring and hiking along Wolf Creek (which originates near my childhood home in Ridgefield, New Jersey) and vegetable gardening on a strip next to our driveway on my family's corner lot.

I regularly watched Crockett's Victory Garden on PBS with my father back in the mid 70's. A birthday gift of the Victory Garden Companion book set me on a path of gardening that persists to this day! I was also influenced by Robert Rodale and read everything I could about Luther



Burbank.

So it was no wonder that when I graduated high school I majored in Plant Science at Cook College, Rutgers University, New Brunswick, NJ.

After graduating with a B.S. in Plant Science in 1988 I took a job as a horticulturist for a local interiors-caping company. Three years later I was able to land a career-defining position as horticulturist with Bergen County Parks Department (NJ). I consider this the turning point in my career because the J.A. McFaul Environmental Center was a dual public garden and environmental center.

(continued on page 2)



Gardening in Middle School

Here I was able to be both a naturalist and horticulturist working closely with both plants and animals.

Because of my teaching background (I was a lifeguard and water safety instructor during college) I was recruited to work with the naturalists and regularly taught all the plant, wildlife, and natural history programs. I also worked with the naturalists taking care of the display and educational animals and eventually took the lead on making many improvements to their displays and husbandry techniques. This included the redesign and installation of a new wet/dry trickle filter system for the 600 gallon freshwater and saltwater tanks. I also was very active in wildlife rehabilitation. Most notably I researched and implemented the techniques to successfully rear wood ducks for re-release.

While at J.A. McFaul Environmental Center I taught horticulture in the evening as an adjunct professor at the local community college (Bergen Community College). I also hosted a live weekly gardening radio show with a co-worker's called Gardening Gurus (WGHT 1500 AM - Wayne, NJ) which broadcast Saturday mornings.

In 1994 I attended a Public Garden Conference where I learned about the Longwood Graduate Program. The program was a joint venture between Long-

(continued from page 1)



Boiling sap for Maple Sugaring Program at McFaul Environmental Center circa 1992

wood Gardens and the University of Delaware. I was accepted into the program and returned to school in 1995 for a Masters' in Public Horticulture Administration. Because of my experience at the McFaul Environmental Center I took a winter break course at the Delaware Nature Society and received a Master's Certificate in Environmental Institution Management in addition to my M.S. degree. While in graduate school I developed a website (HorticultureGuy.com) to contin-

ue my work helping home gardeners.

Upon graduation in 1997 from the Longwood Graduate Program I became Executive Director of Lakewold Gardens (Lakewood, WA), a 10-acre historic estate garden which featured landscape designs by landscape architect Thomas Church. There I grew membership base and attendance by 20% and 29% respectively, reversing a downward trend, and restored the parterre and knot gardens to their former glory.



Secret Scented Garden—designed and installed at McFaul Environmental Center

I then became self employed as a horticulture communicator and consultant. I redoubled my efforts on my educational website and added an online garden supply store to the mix. In addition, I created monthly gardening video segments for Comcast.

(continued on page 11)



2019 ANIMAL FOOD FUND APPEAL

**THE CONSERVATION CENTER
REACHES OUT TO YOU FOR HELP
IN DEFRAYING THE MONUMENTAL COST
OF FEEDING THE WILD BIRDS AND OUR ANIMAL
AMBASSADORS THROUGHOUT THE YEAR.**

**THE ANNUAL EXPENSE OF KEEPING OUR
BIRDS, SNAKES, TURTLES, SALAMANDER,
AND FEEDERS FULL IS APPROXIMATELY \$5500.**

**YOUR DONATION, NO MATTER HOW SMALL,
WOULD BE GREATLY APPRECIATED.**

Yes! I'd like to help feed wild birds and animal ambassadors at the White Memorial Conservation Center with my gift of:

()\$5 ()\$10 ()\$20 ()\$50 ()\$100 ()Other \$ _____

Name: _____ Address: _____ State: _____ Zip: _____

**Please make your check payable to WMCC, 80 Whitehall Road, P.O. Box 368, Litchfield, CT 06759
Your donation can also be made on-line or over the phone by credit card! Visit www.whitememorialcc.org or call us at 860-567-0857!**

Make a Difference

In her continuing series, Zoë Greenwood helps you find small ways to help the environment.

It all matters. Every *single* thing we do matters! Everything from remembering our reusable bags to foregoing paper straws to taking receipts to recycle and picking up the extra napkins the waitress brought to your table “just in case” to use at home. We are *all part* of the whole picture of how we relate to this world and to each other.

We are related to each other as part of mankind and we are related to every single natural thing on this earth. We are **ALL PART OF THE WHOLE!** What we do *to* this earth, we are doing *to ourselves* because we are all one. There is no “her” and “me,” it is all “us”.

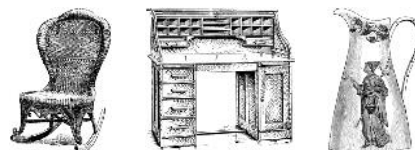
Sometimes people feel that the bit they do for the environment is just a drop in the bucket and doesn’t matter in the big picture. But, I **KNOW** that is the wrong attitude. It *all* matters. I was encouraged the other day when I needed to make a trip to a big box store and then to the local grocery store. Upon entry at both places, a well-placed sign told me that the store in question would no longer be providing non-reusable bags; shoppers were expected to bring their own bags or pay a fee for the store brand. I thought, “it’s about time!” I’ve been reusing bags for about twenty years! It is just second nature to me. I hope that it is also the same with you by now.

In our home, already we recycle and reuse and repurpose and skip altogether. Old clothes go to donate. Batteries and metal go into separate bins in the garage. Eyeglasses go to the Lion’s club. Household items are donated or tag-saled or even put out by the road for “free.” Kitchen waste is composted. You all know all of this already. Most of you probably do most of it, too.

But, lately I’ve been wondering about what to do with the “stuff” that isn’t recyclable. What do you do with cereal box inner bags or toothpaste tubes or chip bags? What can I do with those things? Then I re-learned of Terracycle. Terracycle is a free, national recycling program for hard-to-recycle things. In fact, when you go to google “teracycle,” it is the second thing that comes up. That means, we are *not* the only ones interested in making a difference. Lots of people are. Lots of people are finding out about how to help. Guitar strings and laundry jugs and juice bags and so, so much more can be recycled through Terracycle. For many things, all you do is sign up, they send you a bag or box to fill and you send it back to them for no cost. So, all it really costs you is a little time and commitment, which is pretty much all any of this making a difference stuff takes, really. So, check it out and do your part.

I keep reading in various publications that “antiques are out... nobody under the age of fifty is interested in them.” Well, then, how come when hubby and I went to an antique fair in another state recently, there were equal numbers of young and old? Many young people were shopping for their first home together or for dorm rooms, according to overheard conversations. I also read recently that “brown is again trending for home furnishings” – think old wooden hutch or dresser that you can use as is or paint for a more “modern” look. “Old things give a room soul.” Reusing things keeps them out of landfills and are much kinder to our pocketbooks. Plus, if you are lucky enough to have something that belonged to one of your older relatives, you also have the stories that go along with the “blue bowl that was always used for the Thanksgiving potatoes.” It gives us a sense of continuity with those that have gone before.

We are given choices every hour of every day about everything we do. Won’t *you* decide to ***make a difference*** with *your* choices?

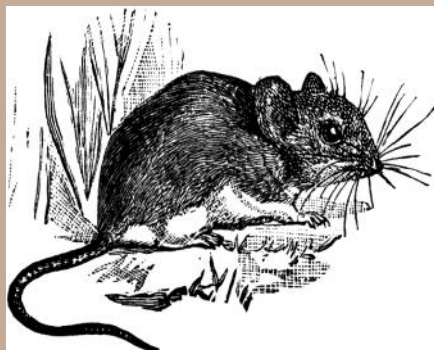


Everybody needs beauty as well as bread,
places to play in and pray in,
where nature may heal and give strength to body and soul alike.
~ John Muir

AFTER-SCHOOL PROGRAMS

NATURE’S NURSERY

For Ages 3-6 Years
First Thursday Every Month
(Sep. 5, Oct. 3, Nov. 7, Dec. 5)
All Classes 4:00 - 5:00 P.M.
Members: \$8/session
or \$25/whole series
Non-Members: \$12/session
or \$45/whole series



AFTER-SCHOOL ADVENTURES

Grades 1-3: Tuesdays in
October (except the 29th)
Grades 4-6: Wednesdays in
October (except the 30th)
All Classes 3:45 - 5:00 P.M.
Members: \$9/session
or \$30/whole series
Non-Members: \$13/session
or \$48/whole series

Advanced registration required. Call 860-567-0857 or visit www.whitememorialcc.org for more information.

THE WHITE MEMORIAL CONSERVATION CENTER
PRESENTS THE 38TH ANNUAL

FAMILY NATURE DAY

SATURDAY, SEPTEMBER 28, 2019, 11AM - 5PM
ADMISSION \$6.00 (CASH & CHECK ONLY)
CHILDREN UNDER 12 & CENTER MEMBERS FREE



SKYHUNTERS IN FLIGHT + RIVERSIDE REPTILES
HORIZON WINGS RAPTOR CENTER
CREATURE TEACHERS + THE BAT LADY
THE TURTLE'S BACK + EDIBLE INSECTS
MUSIC BY: THE BOXCAR LILIES
& IAN CAMPBELL

HORSE DRAWN WAGON RIDES + CRAFTS FOR KIDS
GUIDED WALKS + DEMONSTRATIONS
BOOTHs & EXHIBITS + FOOD + NATURE TAG SALE
LOCAL ARTISANS + SILENT AUCTION + PIE SALE
LIVE ANIMALS + THE POCKET LADY + MUSEUM OPEN HOUSE
WIN A TRIP FOR TWO TO ICELAND IN OUR RAFFLE!



80 WHITEHALL ROAD, LITCHFIELD, CONNECTICUT
LOCATED OFF ROUTE 202
BETWEEN LITCHFIELD AND BANTAM

FOR MORE INFORMATION: 860-567-0857 WWW.WHITEMEMORIALCC.ORG

Bantam Lake's Bald Eagles

By James Fischer, Research Director and Photo credits: Leo Kulinski, Jr. www.leokulinskijr.com

Connecticut's Bald Eagle breeding population has been increasing for the past 40 years due to conservation efforts implemented by the US Endangered Species Act and state of Connecticut's Department of Energy and Environmental Protection (CT DEEP). A breeding pair of Bald Eagles have returned to Bantam Lake for a third successful season in 2019. Bantam Lake's mating pair constructed a nest over several years and successfully fledged two chicks in 2017. Much of what we've learned about this pair of Bald Eagles is from direct observations made by Leo Kulinski Jr. Leo's photographs have helped us learn a great deal about the pair of eagles that raise their chicks at Bantam Lake.

Bald Eagles are able to reproduce at 4 years of age but frequently need several more years to find a mate and build a nest before they can successfully reproduce for the first time. Bald eagles move long distances to find a breeding site. Leo photographed one of the adults and discovered that it had a band. We soon learned that the bird was an adult female that hatched from a nest at Quabbin Reservoir in central Massachusetts, which is approximately 75 miles from Bantam Lake. Bald Eagles initiate breeding in February and are incubating eggs in March. Leo photographed Bantam's Bald Eagles mating on February 15 and egg laying soon followed. Eggs hatch in April and adults are often observed carrying fish back to the nest to feed chicks from April to June. Bald eagles feed primarily on fish. Bantam Lake's eagles eat Yellow Perch, Rainbow Trout, and occasionally Northern Pike; all of these species are relatively large and abundant fish that inhabit the lake and river.

Leo photographed chicks for the first time in early May,



Band Identifying the Quabbin Reservoir Female



Feeding Time!



Nice Catch!



Leaving the Nest!

when they were large enough and able to hold their heads up above the edge of the nest. Chicks exercise their wings in early June and make short flights near the nest a couple weeks later. Juveniles follow adults on short foraging trips in July. Juveniles are often foraging on their own by the end of summer and into the autumn.

All Bald Eagles in this region generally roam long distances during the winter months while searching for open water to hunt for food. Popular destinations are at the outflow of reservoir dams and large rivers where the ice does not form. Bantam Lake outlet is one place where birders regularly observe bald eagles every winter.

Leo Kulinski's diligence and careful photography has helped us learn a great deal about the Bald Eagle pair nesting at Bantam Lake. This information has been sent to the CT DEEP who can use this information to help guide the conservation of Bald Eagles throughout the region.

Bantam's Beauties: **Bald Eagles in our Midst** **with Ginny Apple** **and Leo Kulinski, Jr.**

Saturday, September 21, 2019

A. B. Ceder Room

2:00 p.m.

Members: FREE

Non-Members: \$5.00

Call 860-567-0857

or register online:

www.whitememorialcc.org



Fall 2019 Calendar of Events

For more information on any of our programs, please call us at 860-567-0857 or register online: www.whitememorialcc.org

SEPTEMBER



SEPTEMBER 28th 38th ANNUAL FAMILY NATURE DAY

*Sky Hunters in Flight
Riverside Reptiles + The Bat Lady
The Turtle's Back
Creature Teachers + Edible Insects!
Horizon Wings Raptor Center
Music: The Boxcar Lilies
& Ian Campbell*

11:00 a.m. - 5:00 p.m.

See page 4 for details.

28-Oct. 4 **Museum Kids Free Week ***
Courtesy of Joan and Jack Benham
honoring Wesley D. Parcell

OCTOBER

*After School Adventures
Tuesdays and Wednesdays in October
except the 29th and 30th. For grades 1 - 6
See page 3 for details.*

*Nature's Nursery Series
October 3, November 7, December 5
See page 3 for details.*

5 **Fall Mushroom Foray
with Mushroom Marlene!**
See page 7 for details.



Llama Walks with Debbie Labbe
Oct. 5, 20, Nov. 9, 24
Dec. 14, 21, 22
Call 860-248-0355 or visit
www.countryquiltllamafarm.com



5 **Art 2 Nurture Your Nature:
Paintings of Jan Lyon**
Opening Reception
5:00 p.m. - 7:00 p.m. A. B. Cedar Room
Pre-register online or call 860-567-0857.

8 **Monthly Bird Walk
with Kristi Dranginis**
8:00 a.m. - 10:00 a.m..
Meet at the A. B. Cedar Room.



12 - 18 **Museum Kids Free Week ***
In Memory of Tish Samponaro from her
husband Philip G. Samponaro

12 **Autumn Meditation & Restorative
Forest Wandering with Marlow Shami**
10:00 a.m., A. B. Cedar Room
Members: FREE, Non-members: \$5.00
Call 860-567-0857 to pre-register.

14 **COLUMBUS DAY**
Museum Closed

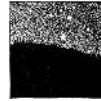


* Free admission to Children ages
12 and under when accompanied by an adult.

19 **Group Reading of The Bat Poet
by Randall Jarrell
with Gerri Griswold**
See page 7 for details.



25 **Star Party**
Astronomy program. Star gazing
to follow, weather permitting.
7:00 p.m., A. B. Cedar Room



26 - Nov. 1 **Museum Kids Free Week ***
In Memory of Ron Hummel
from His Family and Friends

26 **Spooky Halloween Dog Walk
with Gerri & Bradley**
Dress up your pooch and yourself! We'll
parade around the property for about 3 miles!
All dogs must be on leads.
Spooky treats for all after the walk.
2:00 p.m., Meet at the A. B. Cedar Room.
Members: FREE, Non-members: \$5.00,
Pre-register by calling 860-567-0857 or register
online: www.whitememorialcc.org



29 **Staff Meeting**
The Museum will be closing at 12:00 p.m.

NOVEMBER

2 **RAVEN ~ Bird, Myth, Legend
with Mary Beth Kaeser &
Gerri Griswold**
See page 7 for details.



9 - 15 **Museum Kids Free Week***
In honor of Louise W. Willson

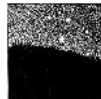
9 **Moose on the Loose**
**CT Moose Adventures with CT DEEP
Wildlife Biologist Andrew Labonte &
CT Moose Man Jake Harton**
2:00 p.m., A. B. Cedar Room
Members: FREE, Non-members: \$5.00
Pre-register by calling 860-567-0857 or register
online: www.whitememorialcc.org



11 **Veterans Day Kid's Program**
See page 9 for details.

12 **Monthly Bird Walk
with Kristi Dranginis**
8:00 a.m. - 10:00 a.m..
Meet at the A. B. Cedar Room.

15 **Star Party**
Astronomy program. Star gazing
will follow, weather permitting.



16 **Tree Identification Walk
with Forest Manager Lukas Hyder**
10:00 a.m.,
Meet in the Museum parking lot.

16 **Contra Dance with O'Wryly!**
See page 7 for details.



23 **Crack o' Dawn Owl Prowl
with Fran Zygmont & Gerri Griswold**
4:00 a.m., A. B. Cedar Room.
Pre-register online or call 860-567-0857.
LIMITED TO 15 PARTICIPANTS!



23 **Autumn in New England
Watercolor Workshop
with Betsy Rogers-Knox**
See page 7 for details.



28 / 29 **THANKSGIVING**
Museum Closed



30 **Walking the Cranberry Pond Trail
with Gerri Griswold**
2:00 p.m., Meet in the A. B. Cedar Room.
Pre-register by calling 860-567-0857 or
register online www.whitememorialcc.org



DECEMBER

7 **ROAD TRIP!**
The Riverside Reptiles Education Center
See page 7 for details.



10 **Monthly Bird Walk
with Kristi Dranginis**
8:00 a.m. - 10:00 a.m..
Meet at the A. B. Cedar Room.



14 **Robin McCahill
presents...
THE SNOW QUEEN**
See back page for details.



15 **Litchfield Hills Audubon Christmas
Bird Count ~ To volunteer, email Ray
Belding: hoatzin1@optonline.net**

21-27 **Museum Kids Free Week ***
Courtesy of Tara and Arthur Diedrick
In honor of Adele and Joseph d'Assern

21 **Welcoming Winter at Five Ponds**
10:00 a.m., Meet Gerri at the trailhead where
Routes 63/61 meet!

25 **CHRISTMAS Museum Closed**

28 **Winter Walk Along the Lake Trail &
Butternut Brook Trail with Marlow Shami**
10:00 a.m., Meet in the A. B. Cedar Room.



December 30 & 31
One Day Fun Day at White Memorial!
Grades 1 - 6
See page 9 for details.

Adult Nature Study Workshops and Saturday Programs: Fall 2019



Fall Mushroom Foray with Mushroom Marlene
October 5, 2019, 10:00 a.m., A. B. Cedar Room
Members: \$15.00 Non-Members: \$30.00

Mycologist Marlene Snecinski leads you on a lovely foray to collect and identify edible mushrooms. A presentation and tasting follow the walk! Dress for the weather! **LIMITED TO 20!**

PLEASE NOTE: Foraging on WMF property is prohibited!



Autumn Meditation & Forest Wandering
October 12, 2019, 10:00 a.m., A. B. Cedar Room
Members: FREE Non-Members: \$5.00

Enjoy a special guided meditation with Marlow Shami, designed for this important season in our life. Then embark on a quiet woodland reunion where Marlow will provide a simple nature activity to help you on your healing journey. Please do not wear fragrances.



Group Reading of *The Bat Poet*
by Randall Jarrell with Gerri Griswold
POTLUCK SUPPER!

October 19, 2019, 6:00 p.m., A. B. Cedar Room
Members: \$15.00 Non-Members: \$30.00

This charming story is perfect for kids of all ages. It is beautifully illustrated by Maurice Sendack. Each participant will receive a copy of *The Bat Poet*. Enjoy a cozy potluck supper. BYOB and a place setting. Dessert and cider provided.



Spooky Halloween Walk with Gerri & Bradley
October 26, 2019, 2:00 p.m., A. B. Cedar Room
Members: FREE Non-members: \$5.00

Celebrate Halloween by dressing up yourself and your four-legged best friend (ALL DOGS ON LEADS!) for a stroll along the Pine Island Trail to Little Pond to the Litchfield Greenway via Gallows

Lane (chills), passing the cemetery (BOO!), and finishing up at Mal-lard Marsh. Spooky treats for everybody after the walk!

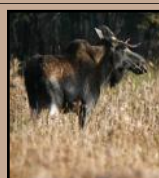


Road Trip to the Riverside Reptiles Education Center
December 7, 2019, 9:45 a.m., Meet in the parking lot.
Limited to 13! All tickets: \$20.00
(Includes transportation and admission)



Raven: Bird, Myth, Legend
with MaryBeth Kaeser & Gerri Griswold
November 2, 2019, 2:00 p.m., A. B. Cedar Room
Members: \$10.00 Non-Members: \$25.00

Mary Beth Kaeser <https://www.horizonwings.org/>, her lovely imprinted Raven, Maven, and Gerri Griswold team up for a program devoted to the most intelligent bird brain in the world.



Moose on the Loose! CT Moose Adventures
November 9, 2019, 2:00 p.m., A. B. Cedar Room
Members: FREE Non-Members: \$5.00

Learn all the scoop about this incredibly majestic and ...er...really big mammal from State of Connecticut DEEP Wildlife Biologist, Andrew Labonte and associate Jake Harton, Connecticut's Moose Man.



Contra Dance with O'Wryly
November 16, 2019, 7:00 p.m., Carriage House
All Tickets: \$15.00

Strap on yer dancin' shoes, pack a light dinner or a snack, BYOB, and get ready for some terrific music and fun with Conservation Center favorite Robert Messor and his colleagues! Tonight the Carriage House will undulate with the gleeful sounds of Contra! Dancing is not mandatory!



Autumn in New England: Watercolor Workshop
With Betsy Rogers-Knox
November 23, 2019, 1:30 p.m., A. B. Cedar Room
Members: \$40.00, Non-Members: \$65.00

Follow along in this step-by-step watercolor workshop and create a simple, scenic, late autumn watercolor, just in time for Holiday gift-giving! All materials included. For ages 12 and up.

Hop aboard the Conservation Center van with Carrie Szwed and Gerri Griswold as we snake our way up to Enfield, Connecticut for a private tour of this fantastic new center owned and operated by our favorite herp expert, Brian Kleinman!

_____ Fall Mushroom Foray.....	Member: \$15.00	Non-Member: \$30.00
_____ Autumn Meditation & Forest Wandering.....	Member: FREE	Non-Member: \$5.00
_____ Reading of <i>The Bat Poet</i> with Gerri Griswold.....	Member: \$15.00	Non-Member: \$30.00
_____ Spooky Halloween Walk.....	Member: FREE	Non-Member: \$5.00
_____ Raven: Bird, Myth, Legend.....	Member: \$10.00	Non-Member: \$25.00
_____ Moose on the Loose.....	Member: FREE	Non-Member: \$5.00
_____ Contra Dance with O'Wryly.....	All Tickets: \$15.00	
_____ Woods in Winter Watercolor Workshop.....	Member: \$40.00	Non-Member: \$65.00
_____ Road Trip to Riverside Reptiles.....	All Tickets: \$20.00	

Name _____
Address _____
City _____ State _____ Zip _____
Phone _____ e-mail _____
Please circle one: member non-member
Payment enclosed: Program fee: \$ _____ Membership fee: \$ _____ Total \$ _____

Clip this form, make check payable to White Memorial Conservation Center and mail to:
White Memorial, P.O. Box 368, Litchfield CT 06759
You can now register online: www.whitememorialc.org !



Become a member of The White Memorial Conservation Center and take advantage of the member discount, along with free admission to the Nature Museum, a discount in the Gift Shop, and receipt of the quarterly newsletter and calendar of events. Your tax-deductible fee will help sponsor programs like these. A family membership is \$60.00 per year and an individual membership is \$40.00 per year.

For more information call 860-567-0857
or visit: www.whitememorialc.org

Homing Pigeon: A Visit with Michael Anderson of Yale Peabody Museum By Gerri Griswold

I met a man today who electrified me. Visiting Michael Anderson, Preparator of the collection at Yale Peabody Museum, was like being hooked up to a defibrillator. I was jolted into the land of the living again. For a fleeting fifteen minutes this exquisite man guided me through his lair...a humble basement office, concrete floor, no windows, brightened by his very existence and the multiple projects he and his assistants are juggling...the 3-D casts of a Passenger Pigeon and a Heath Hen, reconstructions of human heads, the front legs of Eohippus, the earliest horse, the complicated procedure he spent years developing to make realistic autumn leaves out of cloth, photography, and wax. Michael's latest challenge... a sphinx moth. How can he create a realistic specimen feeding from a Yellow Columbine out of this delicate creature pinned in a box?

I was so full of questions. "Of all of the projects you have created or restored over the years, do you have a favorite?" His smile broadened. I expected maybe 3 or 4 examples or, "How could I possibly choose?" His answer came quickly and without hesitation ~ the bronze Torosaurus in front of



Michael Anderson with
our Passenger Pigeon

the Peabody Museum.

I was at Yale to collect the Conservation Center's Passenger Pigeon. What a thrill to have her tidied up. She is over a century old. She is not the snazziest mount and is very fragile, but to me she is as rare and as beautiful as true love. To me she is the jewel in the crown of our Nature Museum. We soon hope to have her on display for you to enjoy.



Teacher's Pet ~ Yale Peabody Torosaurus
Photo credit: Yale Peabody Museum

A Farewell to Keith Cudworth

Keith Cudworth, Executive Director of The White Memorial Foundation for 21 years, retired on Aug. 16, 2019 after 34 years with the organization.

Cudworth served as White Memorial's superintendent from 1985 to 1998, before becoming Executive Director. In 2013 he authored a book about the history of White Memorial in celebration of the Foundation's Centennial.

Keith and his wife, Jane Coughlin, will be settling nearby. From their longtime residence on Whitehall Road it's just a hop, skip, and jump to the newly refurbished former home of Art Ceder on North Shore Road.

The Foundation's Board of Trustees gifted Cudworth with a very impressive bicycle as a parting gift at the Annual Employee and Trustee Dinner, May 2, 2019. Keith is very much looking forward to cycling and other outdoor pursuits during this next chapter of his life.

On behalf of the Trustees and Staff at White Memorial, thank you, Keith for caring for these 4000 acres and leading us through these 34 years. Happy Trails!



Keith Cudworth

Order from Amazon Smile & Help WMCC!
Did you know that each time you order from Amazon Smile a donation is made to White Memorial ?

Just sign up and start shopping!

<https://smile.amazon.com/>



Have YOU signed up to receive our weekly email newsletter,
THE HABITATTLER?

Calendar of Events, Program Reminders, Top 10 Notable Sightings
The Tail End Video....And more

Visit: www.whitememorialcc.org to sign up.

Volunteer Spotlight: Melissa Brutting

Story and Photograph by Gerri Griswold

Melissa Brutting is a native of the Brass City, but throughout her childhood, visits to a lake cottage in Goshen owned by her great grandparents was the norm. "I always loved it. I was always drawn to this area my whole life and tried to come up this way." Melissa's grandfather had a profound impact on her life. "He was very active in hang-gliding and wind surfing, hiking. He is the reason I fell in love with the outdoors."

For 20 years she has taught at the Litchfield Intermediate School. She stumbled upon White Memorial one day while searching for a place to hike. "Oh my God! This is the most beautiful place I've ever seen!" She immediately established a goal to hike all 40 miles of trails. At the Intermediate School where she teaches science, she met retired Education Director Jeff Greenwood during his Litchfield Garden Club sponsored programs. They became good friends. In 2009, Greenwood asked Melissa to join our Education and Activities Committee. "I was so honored to do this!"

Brutting received an undergraduate degree from The University of Connecticut in Animal Science. She thought per-



Notable Sitting: Melissa Brutting graces her beloved Little Pond Boardwalk.

haps she might end up as an equine veterinarian because of her deep love of horses. While at UCONN she taught

riding in both English and Western styles. She really loved teaching. Her sister suggested that Melissa take education courses. "Before you knew it, I had a Masters in Education from the University of Bridgeport." After that she earned an Education Leadership degree at Sacred Heart University.

Melissa and her husband Adam now reside in Goshen on the same lake where she spent so many summers in a house they built by hand. They have many nieces and nephews and their beloved Golden Retrievers. Adam is a teacher in the Woodbury school system. It is where they met while Brutting was student teaching. From a long-term sub job in Woodbury, Melissa was called to Litchfield Intermediate School. She is now a Science teacher for fourth and fifth grades, and sixth grade STEM. "I teach them about conservation and to be aware of what is going on. I want these children to fall in love with birds, nature, and conservation. I want them to protect it. My goal as a teacher is for them to grow up being aware of this gift we must protect."

Continued on page 10



VACATION PROGRAMS

LEARN 'EM AND LOG 'EM!

Monday, November 11 (Veteran's Day)

Have you ever wanted to identify the animals around you, even down to their exact species? This program will do that and more, as you become citizen scientists! You'll go out "in the field," identify wildlife, record your observations, and submit them to real-world scientific projects, such as E-Bird, I-Naturalist, and Project Squirrel. Education Director Carrie Szwed will be your teacher and lead your team of young naturalists. Meet in the A.B. Ceder Room. Drop-off program. Pre-registration and pre-payment are required. Please call 860-567-0857 or visit whitememorialcc.org to register. Space is limited!

Grades 6-8: 9:30-12:00pm, Grades 3-5: 2:00-4:30pm

Members: \$20/child, Non-Members: \$30/child

ONE-DAY FUN DAY!

Nature is so much fun in the winter! So, grab your coat, boots, and hat, and let's spend one of your vacation days learning about the natural world around you. Get outside, play games, make crafts, meet live animals! A morning snack and drink will warm us up between adventures. Please bring a lunch. Parents/Guardians are welcome to stay, but it is not necessary. Meet in the A.B. Ceder Room. 9:30am -3:30pm. Pre-registration and pre-payment are required. Please call 860-567-0857 or visit whitememorialcc.org to register. Space is limited!

Grades 1-3: Monday, December 30, Grades 4-6: Tuesday, December 31

Members: \$40/child, Non-Members: \$70/child



Community Service at White Memorial

By Lukas Hyder, Forest Manager

The year so far has seen many individuals and groups contributing time, talents and resources, all of which continue to have a positive impact on the property.

Prior to opening the campgrounds, two returning groups conducted spring cleanups in April. Boy Scout Troop 102 from Naugatuck tidied up Windmill Hill Campground and the Family Campers and RVer's worked out at the Point Folly Campground. These two groups have come for many years and are a great help in getting us ready for the camping season.

The following individuals have contributed hours on a variety of tasks including invasive control, trail and property maintenance, wildlife habitat improvement, etc.: Shaun Hara, Raymond Boucher, Buckley Huffstetler, Tyler Strull, Omar Abdo, and Yeral Ramirez.

The 7th & 8th graders from Indian Mountain School and the seniors from Taft School constructed 12 large wildlife brush

piles in our East Chestnut Hill timber harvest area over two weekends in May.

We hosted the Yale alumni for the 11th year for their *Yale Day of Service* on May 18th. They worked on the Duck Pond Boardwalk and replaced over 90 rotten treads.

We are very grateful for the two Eagle Scout Projects this spring, that constructed over 280 feet of new boardwalk on the north trail in Mallard Marsh. Thomas Mulvehill and William Morrison are both from Troop 75 in Terryville and each constructed 140 feet of boardwalk. Thomas' project was on April 6th and William added his on May 4th. Both Scouts also raised all the money for all the materials. Many thanks to both scouts for their hard work.

A hearty and heartfelt thanks to all these groups for a job well done. It is a great help to us in accomplishing things that would not otherwise be possible.



Melissa Brutting

Continued from page 9

When asked what White Memorial means to her, Melissa's eyes swell with tears. "How can I put it into words? It has been such a part of me and my teaching career. I could cry. These people (Alain and May White) thought about leaving us this beautiful space so long ago."

Followed by... "Jeff Greenwood should write a book!"

Brutting is also very active with our neighbors at the Livingston Ripley Waterfowl Conservancy

where she serves on their advisory board. The children she teaches also benefit from LWRC's valuable resources. Melissa's many hobbies include anything outside: birding, hiking, biking, yoga, and traveling. Her dream to visit the Serengeti has been realized. She has visited Macedonia. She just returned from Iceland and would like to return to Alaska. She can also cross off England and Ireland but has yet to visit Scotland and Australia. One more Holy Grail would be to visit the Polar Bears up

north in Churchill, Canada,

No matter where she wanders... Little Pond... Snafellsjokull... The Burren... this dynamic creature leaves behind a trail of fairy dust. The stuff which is produced only by those who have a passion for life and a mission: to make our world a better place by sharing their gifts. Thank you, Melissa, for spreading your magic over our 40 miles of trails and as a coveted member of our Education / Activities Committee.

WELCOME

NEW BOARD MEMBERS!



Armand A. Della Monica

Photo credit: www.kirkland.com



Ranger Mack

Photo credit: Leslie Dumke Studio



A Planned Gift can make
a difference in your future and ours.

www.whitememorialcc.org



Fall has always been my favorite season.
The time when everything bursts with its last beauty,
as if nature had been saving up all year for the grand finale.

~ Lauren DeStefano



ROOM TO GROW

CONTINUED FROM PAGE 2

I also wrote various articles for newspapers and magazines and ultimately worked on the Northwest (American Horticultural Society) SmartGarden Regional Garden Guide (Dorling Kindersley Publishing) which was published in 2003. I regularly taught continuing education gardening classes for the local colleges which transitioned me back into formal education.

In 2005 I helped Clover Park Technical College (Lakewood, WA) rebuild its horticulture program. In 2009 I moved to South Puget Sound Community College (Olympia, WA) where I was the lead professor and program manager of the Horticulture Technology Associates of Applied Science program.

During my time at SPSCC the horticulture program increased enrollment by 37%. Much of this was due to the creation of new sustainability based-certificate opportunities including a very popular Sustainable Food Production certificate. Change in leadership at both colleges led to the closing of their horti-

culture programs.

It was then that I landed just miles from my childhood home and became the Executive Director of the Tenaflly Nature Center. Tenaflly Nature Center is a green island just minutes from the George Washington Bridge that encompasses nearly 400 acres of woodlands and seven miles of trails.

I helped forge new partnerships, positive relationships and created a welcoming environment for the public. I also raised over \$750,000 for habitat and trail restoration, as well as facility improvements.

Some of the highlights of my tenure at Tenaflly Nature Center include:

- ◆ The installation of the Butterfly House and Pollinator Garden
- ◆ Main trail (1/2 mile) rehabilitation and restoration
- ◆ Collaboration with Lamont-Doherty Earth Observatory (Columbia University) on remote sensing dendrometers

- ◆ Pfister's Pond (3.5 acres) restoration work in collaboration with the Borough of Tenaflly
- ◆ New signage and wayfinding
- ◆ Many facility improvements

Over the next few months I look forward to learning more about our staff, volunteers and supporters as well as the amazing land that we have been entrusted with. One of my goals is to explore the 4000 acres, touch the plants, and feel the rhythm of the land. To this end I plan on walking all 40 miles of trails before the New Year.

I am joined by my wife Patti and son Nicholas who are both equally excited for this next chapter in our lives. My mother Frances will also be joining us and will be moving to Torrington.

I would love to learn more about why you support White Memorial and any stories about your experiences with the organization. You can reach me at peter@whitememorialcc.org.



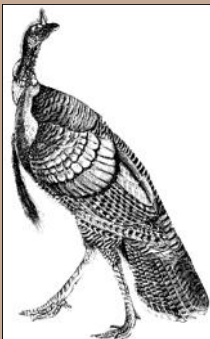
PARENTS & TEACHERS,

CHECK OUT WHAT WE CAN OFFER YOUR CHILDREN!

GROUP / SCHOOL PROGRAMS

POND PROWL
TAKE A HIKE
AMAZING ADAPTATIONS
OUR LOCAL ECOSYSTEMS
NATIVE CT WILDLIFE
WAY TO GROW
...PLUS MANY MORE!

FREE ADMISSION TO THE MUSEUM
WITH A PROGRAM BOOKING!

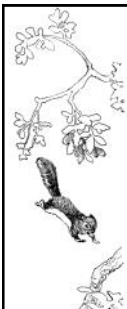


**VISIT OUR WEBSITE FOR A
COMPLETE LIST OF
PROGRAMS AND MORE
INFORMATION.**

**MANY PROGRAMS CAN BE
CONDUCTED AT
YOUR FACILITY!**

**PROGRAMS CAN BE
BOOKED BY CALLING:
860-567-0857**

VACATION PROGRAMS



LEARN 'EM AND LOG 'EM
MONDAY, NOVEMBER 11 (VETERAN'S DAY)
IT'S ALL ABOUT CITIZEN SCIENCE!
(SEE PAGE 9)

ONE-DAY FUN DAY!
GRADES 1-3: MONDAY, DECEMBER 30
GRADES 4-6: TUESDAY, DECEMBER 31
IMMERSE YOURSELF IN NATURE THIS HOLIDAY!
(SEE PAGE 9)

AFTER-SCHOOL PROGRAMS

AFTER SCHOOL ADVENTURES
(MOST) TUESDAYS AND WEDNESDAYS IN OCTOBER
(SEE PAGE 3)

NATURE'S NURSERY
FIRST THURSDAY EVERY MONTH
(SEE PAGE 3)

SCOUT PROGRAMS



CUSTOM-DESIGNED PROGRAMS FOR CUB SCOUTS AND
GIRL SCOUTS TO HELP FULFILL BADGE REQUIREMENTS!
WE ALSO OFFER FREE CAMPING TO ALL YOUTH NON-PROFITS!

Puppeteer Robin McCahill presents
THE SNOW QUEEN



WHAT'S INSIDE THIS
 EDITION OF
 ~
 SANCTUARY

Animal Food Fund	2
Make A Difference.....	3
Family Nature Day.....	4
Research.....	5
Events Calendar.....	6
Workshops.....	7
Farewell to Keith	8
Volunteer Spotlight.....	9
New Board Members.....	10
Children's Programs.....	11



Saturday, December 14, 2019

11:15 a.m. - 3:00 p.m.

Meet Santa and Mrs. Claus from 11:30 a.m. until 1:30 pm

Horse Drawn Wagon Rides + Cookies + Hot Chocolate + Carol Sing by the Fire

2:00 p.m. Performance of The Snow Queen in the Carriage House

ADMISSION: HATS, MITTENS, GLOVES, SCARVES,

NON-PERISHABLE FOODS, and CASH donations to F.I.S.H / Torrington, CT.

This beautiful program is made possible by a very kind anonymous donor.

Please pre-register by calling 860-567-0857 or register online:

www.whitememorialcc.org

WHITE MEMORIAL THANKS

Northwest Community Bank + Litchfield Bancorp + Litchfield Stop & Shop
 New Morning Market + Krummi Travel LLC + Linda Cooley Nash + Gerri Griswold
 Lee Swift + An Anonymous Donor + The Thomaston Savings Bank Foundation &
 The Connecticut Community Foundation / GIVE LOCAL
 for making our 38th Annual Family Nature Day possible.



Non-Profit Organization
 U.S. POSTAGE PAID
 TORRINGTON, CT
 06790
 PERMIT NO. 313

ADDRESS SERVICE REQUESTED

The White Memorial Conservation Center
 P.O. Box 368
 Litchfield, CT 06759