



White Memorial's Early-Spring Wildflowers

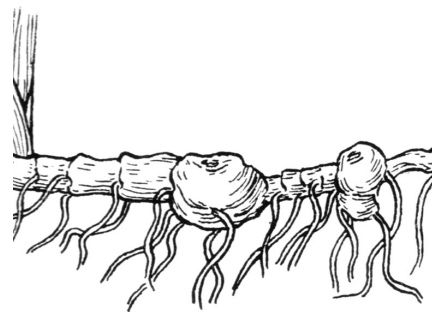
By James Fischer
Research Director
March 24, 2020

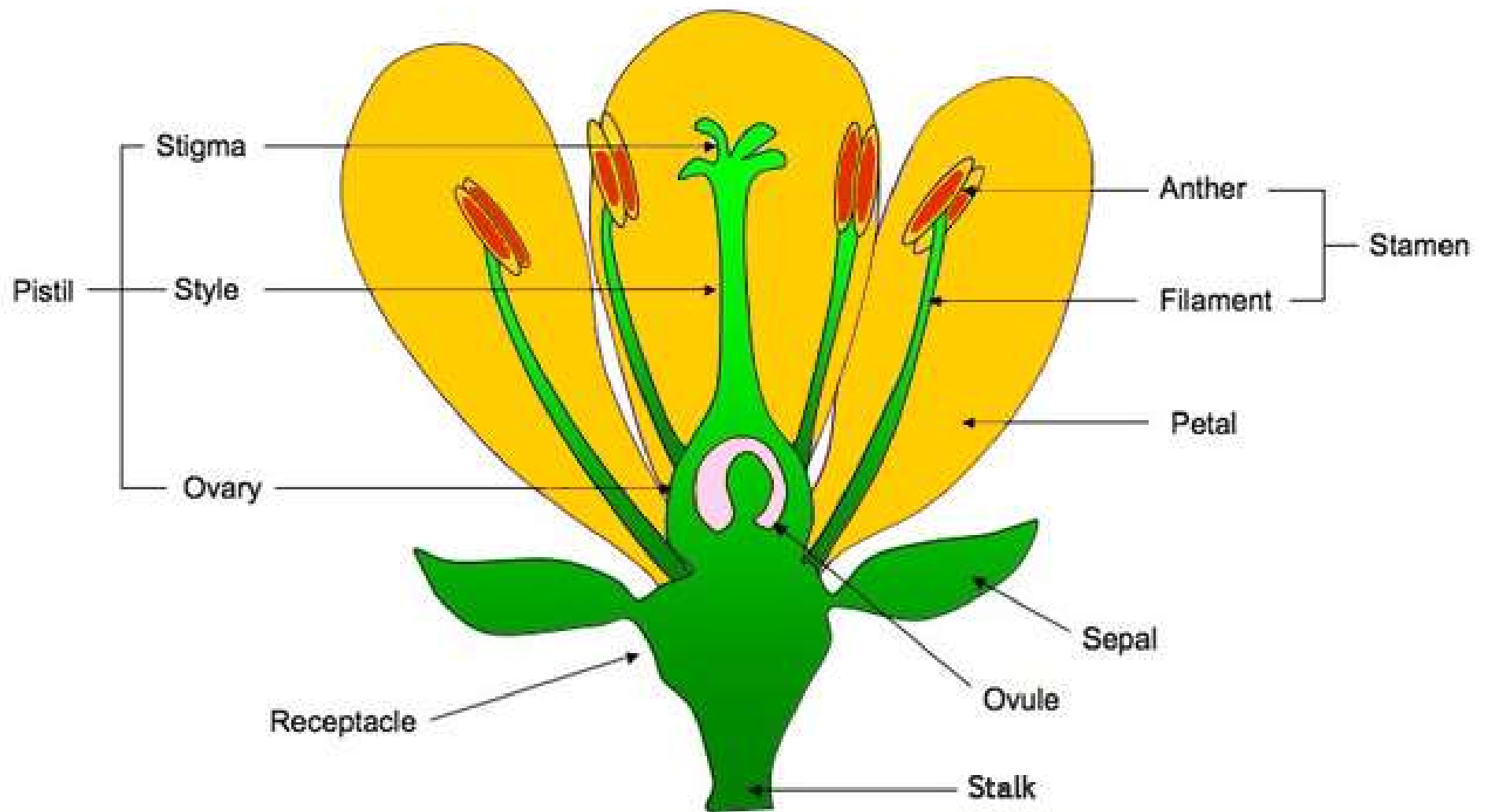
White Memorial's
CONFERENCE-VIDEO
Productions



Adaptations of Early Spring Wildflowers

- Rapid growth rates and small stature
- Compete for sun and moisture when there is no tree canopy
- No need to form a lot of biomass
- Warmer microclimate close to the ground
- Encourages seed dispersal by ants
- They can grow in cold soils
- Roots are tubers, shallow depth
- Early bees and flies are pollinators
- Ants seed dispersal (elaiosome) myrmecochory



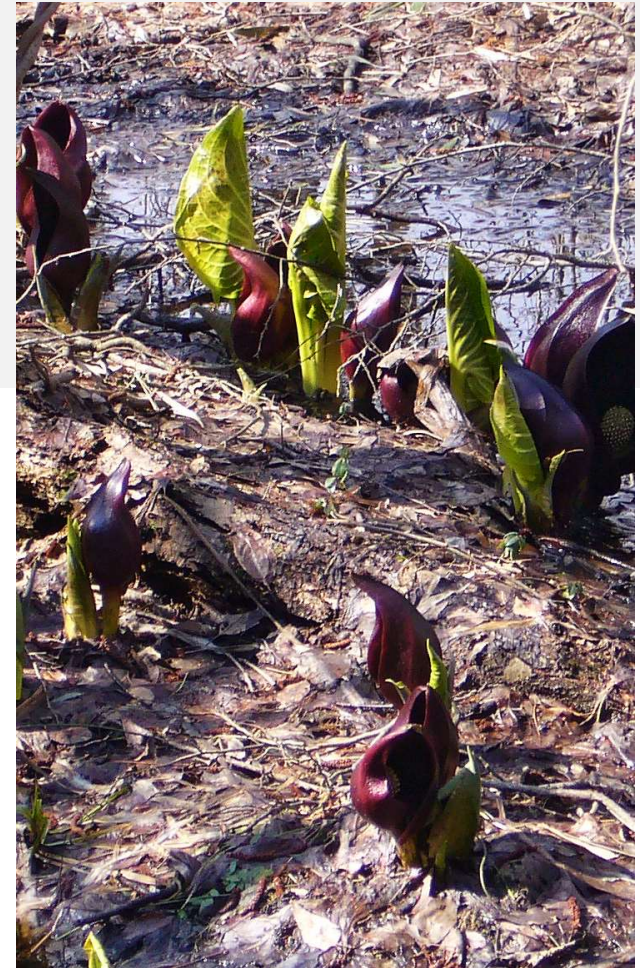


Parts of a flower



Eastern Skunk Cabbage (*Symplocarpus foetidus*)

- **Flower:** knob-shaped cluster (spadix) inside a purple-brown to green mottled hood.
- **Leaves:** large egg-shaped with heart-shaped base, emerge after flowers.
- **Habitats:** swamps, wetlands, and damp soils.



Coltsfoot (*Tussilago farfara*)

Key Features:

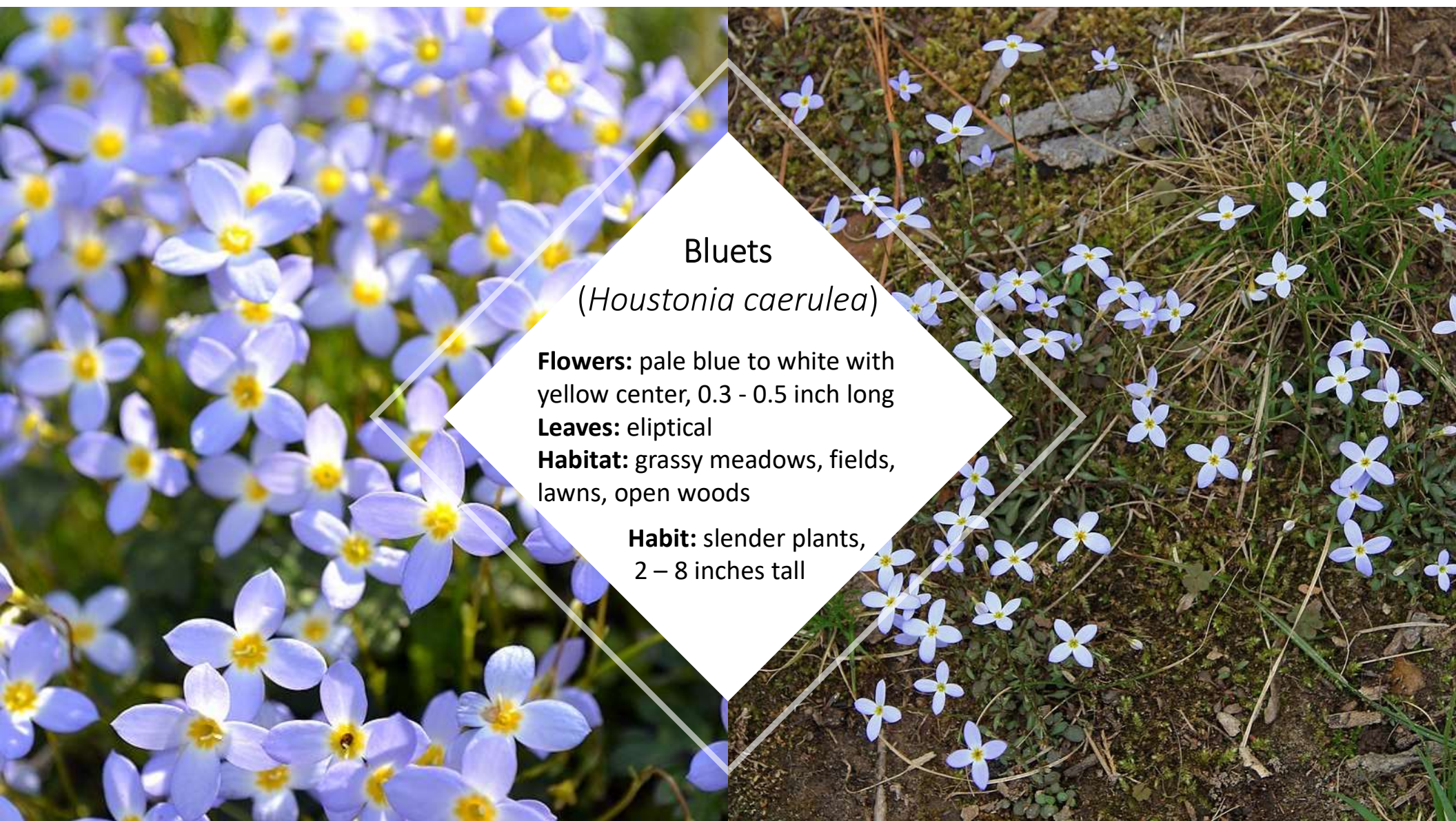
Flowers – yellow, fine petals, about 1 in. wide, stalk scaly, 3 – 18 in. tall, *appear before leaves*

Leaves – *appear after flowers*, rounded heart shaped base, lobed 3 – 7 inches wide

Resembles dandelion

Habitats – damp soil of streambanks and roadsides





Bluets
(*Houstonia caerulea*)

Flowers: pale blue to white with yellow center, 0.3 - 0.5 inch long

Leaves: elliptical

Habitat: grassy meadows, fields, lawns, open woods

Habit: slender plants, 2 – 8 inches tall



Trailing Arbutus (*Epigaea repens*)

Flowers: pink to white 0.5 inches long, in tight clusters at end of branches

Leaves: Leathery, oval 1 – 3 inches long with rounded heart shaped base

Habit: stem is hairy and trailing, grows along the ground

Habitats: Forests, clearings, trail edges, in dry acidic soils

iNaturalist

iNaturalist is an online social network of people sharing biodiversity information to help each other learn about nature.

- record your own observations,
- get help with identifications,
- collaborate with others to collect this kind of information for a common purpose,
- access the observational data collected by iNaturalist users

<https://www.inaturalist.org/>

Round-lobed Hepatica (*Anemone americana*)

Flowers: blue, pink, or white 0.5 – 1 in. wide, 6 – 12 petals (sepals), 3 green bracts

Leaves: Leathery, 3 round-lobed at tips.

Habit: stem is hairy

Habitats: rich, moist, rocky, mostly deciduous forests



Bloodroot
(*Sanguinaria canadensis*)

Flowers: white 1.0 - 1.5 inches wide, single, 8 – 12 petals, 3 – 6 in. tall,

Leaves: single leaf with 5 – 9 deep lobes

Habit: juice is orange – red.

Habitats: Forest with rich soils

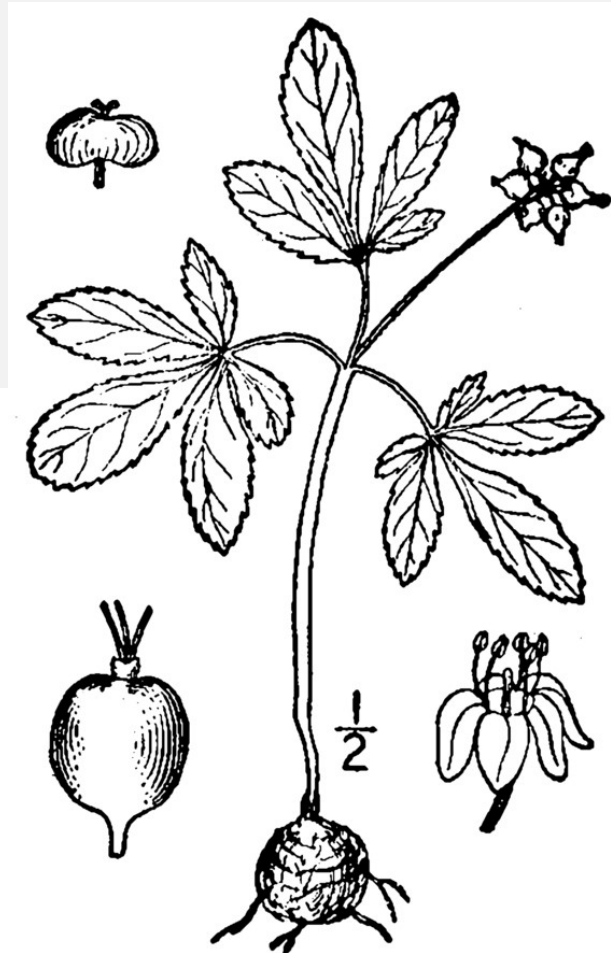




Trout Lily (*Erythronium americanum*)

Flowers: Solitary, nodding, yellow, 0.75 - 1.5 inch long
2 anther forms: Yellow and Brown

Leaves: usually mottled with brown, 3 – 8 inches long



.....

Dwarf Ginseng (*Panax trifolium*)

- **Flowers:** very small white with 5 petals and 5 stamens, arranged in an umbel
- **Leaves:** 3 – 5 leaflets, stalkless
- **Habit:** Round tuber and 3 – 8 inches tall
- **Habitat:** moist woods

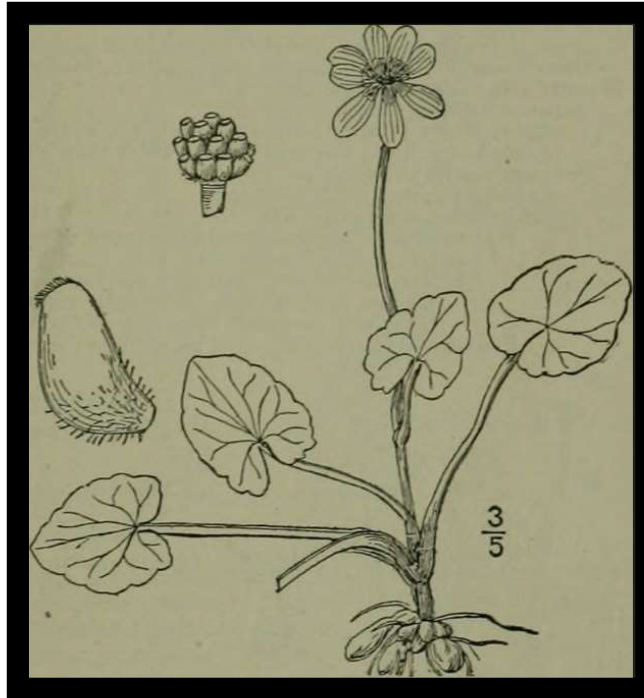
Dutchman's Breeches
(*Dicentra cucullaria*)

Flower: white racemes, 0.5 - 0.75 inches long, resemble pantaloons hung up to dry, with spurs on top of flowers.

Leaves: delicate, finely divided, feathery appearance

Habitat: Rich woods and shaded ledges.





Invasive
Species

Lesser Celandine (*Ranunculus ficaria*)

Flower: yellow, 8 – 12 petals, 1 inch wide

Habit: Tubers that resemble fingerling potatoes

Leaves: heart shaped, bluntly toothed, 1 – 2 inches long

Habitat: wet soils, riverbanks, floodplains, wetlands, etc.

Marsh marigold (*Caltha palustris*)



Flowers: 1 – 1.5 inch wide, Yellow, 5 – 9 sepals

Leaves: heart-shaped, toothed margin, long-stalked

Habitat: Swamps, wet meadows, wetlands

Habit: 1 – 2 feet tall

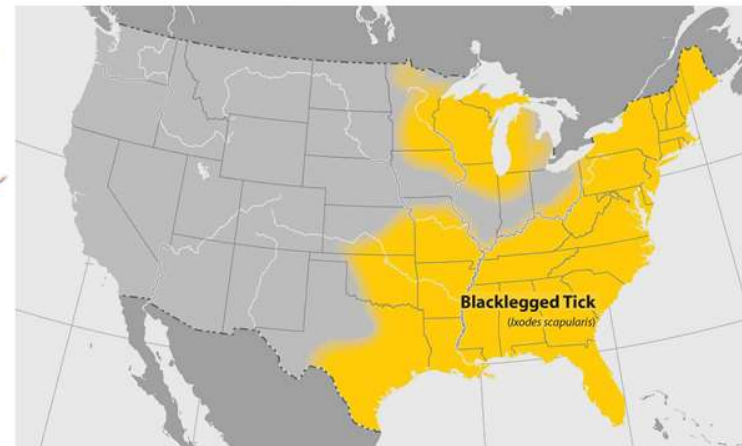


Black-Legged Tick - Identification and Range

Also known as "Deer Tick"



Photo: UMaine Cooperative Extension



CDC

Black-Legged Tick Seasons



Seasonal activity of *Ixodes scapularis* larvae, nymphs, and adults

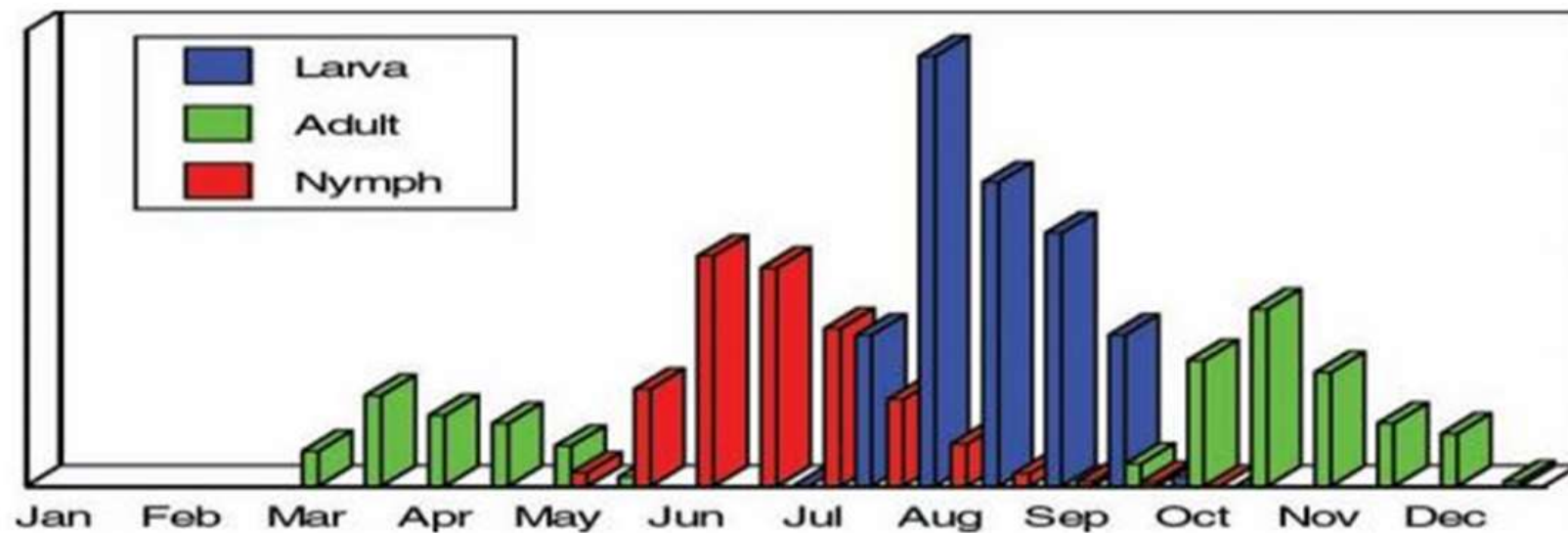


Photo: CAES

White Memorial's
COnference-**VID**eo
Productions



Wildlife Outside Your Window!

By Carrie Szwed, Thursday, March 26, 2020, 4:00 p.m. EST

Deep Dive into Nature ~ Guided Meditation

By Marlow Shami, Saturday, March 28, 2020, 10:00 a.m. EST

Meet the North American Porcupine

By Gerri Griswold, Saturday March 28, 2020, 2:00 p.m. EST